



Med-860 RENO

ND:YAG Pico Laser System

MHRA Registered Laser Device Easy to use with customisable options, valuable tool in aesthetic practises focusing on tattoo removal and pigment correction.

Exclusive Features

- 1. Pigmented Lesions and Tattoo Removal:** It can effectively target and treat various pigmented skin issues and tattoos of all colours, making it versatile for different skin conditions.
- 2. Single handle for all Q switched applications:** This feature simplifies its use by integrating multiple functions into one handle, reducing the need for switching between different tools during procedures.
- 3. Five treatment heads:** Customisation is a strong point, as the device comes with five interchangeable heads, allowing practitioners to tailor treatments based on the patients needs and the type of pigment or tattoo being addressed.
- 4. Top hat and double rods technique the inclusion of the top hat technique:** Paired with double rods enhances treatment precision and efficiency. This method ensures consistent energy delivery, which can lead to quicker safer and more effective treatments for both pigment and tattoo removal.
- 5. Proven technology backed by 15 years of research:** This laser system has a solid foundation scientific validation, which could increase practitioner confidence in its reliability and effectiveness.



Principle

The **PICOLASER** is a cutting-edge ND:YAG picosecond laser system designed specifically for treating tattoo colours and pigmented lesions here's what makes it stand out:

PICOSECOND TECHNOLOGY

Unlike traditional lasers the pico laser delivers energy and ultra shock picosecond pulses which allows for more precise targeting of ink particles and pigmented lesions without damaging surrounding tissues this results in faster more efficient treatments with fewer sessions needed.

TATTOO REMOVAL

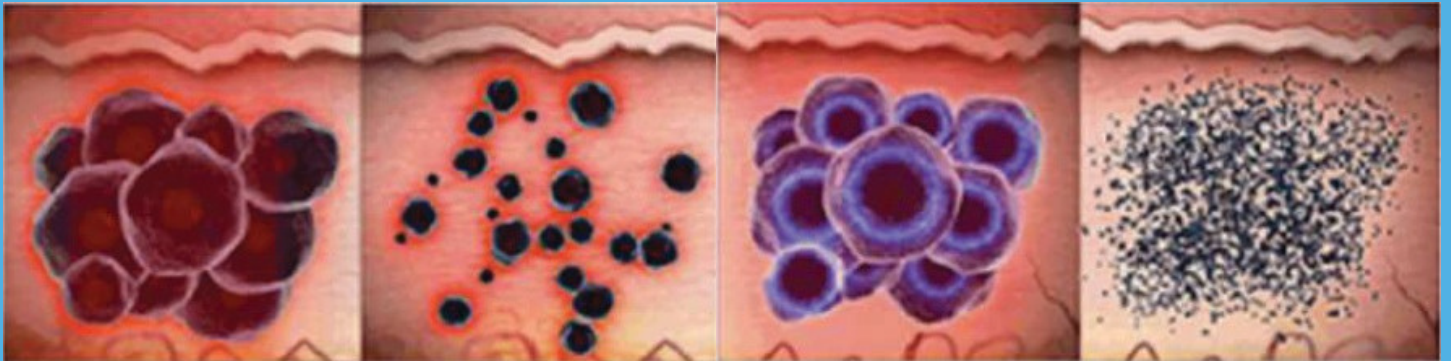
It is highly effective in removing tattoos of various colours, including stubborn inks like green and blue which are often harder to treat with standard lasers.

PIGMENTED LESIONS

Pico laser exams and treating a variety of pigmented skin conditions such as age spots, freckles and melasma by breaking down the pigment more effectively.

SPEED AND COMFORT

The device boasts superior performance in terms of both speed and patient comfort. The pico-second pulses reduces discomfort during treatments and the faster energy delivery can minimise downtime for patients.



Market Leading Performance

According to its description, it outperforms other devices on the market in terms of speed and comfort, making it a preferred choice for clinics looking to offer top tier tattoo and pigment removal services.

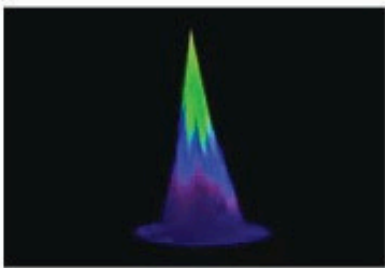
In essence **PICO-LASER** combines advanced technology with comfort and efficiency, positioning itself as a top contender in the laser treatment industry for both tattoo and pigmented issues.

“Top- Hat” Beam Technology

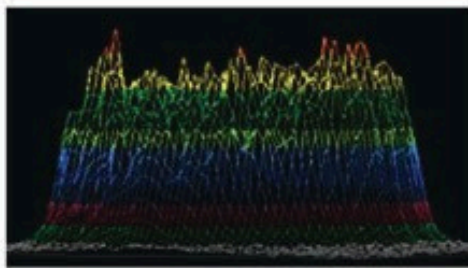
Improved treatment safety and effectiveness through uniform energy distribution. The top-hat beam profile reduces the risk of epidermal damage, minimises changes in tissue texture, and lowers the likelihood of adverse effects.

Applications

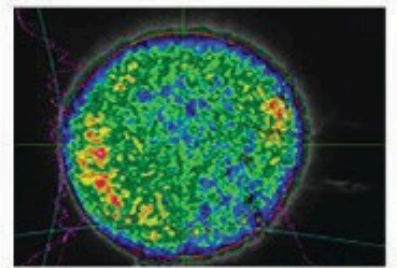
- Body tattoos, eyebrow tattoos, lip liner
- Nevus of Ota and birthmarks
- Freckles, melasma, dark spots, age spots, coffee spots, and sunburn spots
- Pigment issues in both the epidermal and dermal layers
- Skin rejuvenation, skin whitening, and resurfacing
- Removal of acne scars and pore tightening



Beam profile side view without an homogenizer



Beam profile side view with an homogenizer for a Top-Hat beam



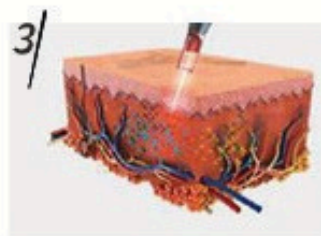
Top-Hat Beam Profile
-1064nm / 6mm / 400mJ



Laser Radiation



Collapsed



Collapsed



Pigment Removal

Before& After



Advantages

- **Imported Light Guide Arm:** Features a high-quality Korea-imported 7-joint arm laser, providing more precise energy control with a deviation of less than 10%.



- **Stable Laser Output:** Delivers consistent laser output, ensuring stable performance over multiple shots during extended treatments.



- **Adjustable Spot Size:** The handle allows for adjustable light spot sizes, offering flexibility for various treatment areas and conditions.



- **Multi-Detection Output Control:** Equipped with multi-detection operation output control, ensuring fast and efficient laser beam delivery at a rate of 10 shots per second, significantly reducing treatment time.



- **Imported Xenon Lamp:** Utilises an imported xenon lamp with water and electricity separation to ensure the machine's operational stability and safety.



Technical Specifications

Energy Consumption	1500VA (Max)
Power Supply	220V/110V50Hz/60Hz
Screen size	15.6寸
Screen Resolution	1920x1080
Wavelength	1064nm +532nm
Pulse width	4-6ns
Frequency	1Hz-10Hz
Spot size	2mm -10mm Adjustable
Max Single pulse Energy	2000mJ (1064nm) 1000mJ (532nm)
Laser Power	1200W
Laser Type	Φ7x1PCSΦ8x1PCS (SinglelightDoubleROD)
Work mode	Singlepulsedoublepulse
Aiming System	Redlight
Cooling System	WaterWater

